



**DOCUMENT 00 90 01  
ADDENDUM #1**

**Project:** Provo City Airport Pump Station PROVOENG202320542

**Date:** Tuesday, November 15, 2022  
**Bid Date:** Thursday, December 1, 2022  
**Bid Time:** 2:00 p.m.

---

This addendum shall be considered part of the Contract Document for the above referenced project as though it had been issued at the same time and shall be incorporated integrally therewith. Where provisions of the following supplementary data differ from those of the original Contract Documents, this Addendum shall govern and take precedence. Receipt of this addendum shall be acknowledged in Document 00 41 00 – Bid Form.

---

Table of Contents

Project Drawings .....2  
    Sheet C-103.....2  
    Sheet C-506.....2



## Project Drawings

### Sheet S101

Delete and replace this sheet. The existing hatched area showing the rebar details in the sump basin has been extended to show the rebar detailing in the concrete slab outside of the sump basin.

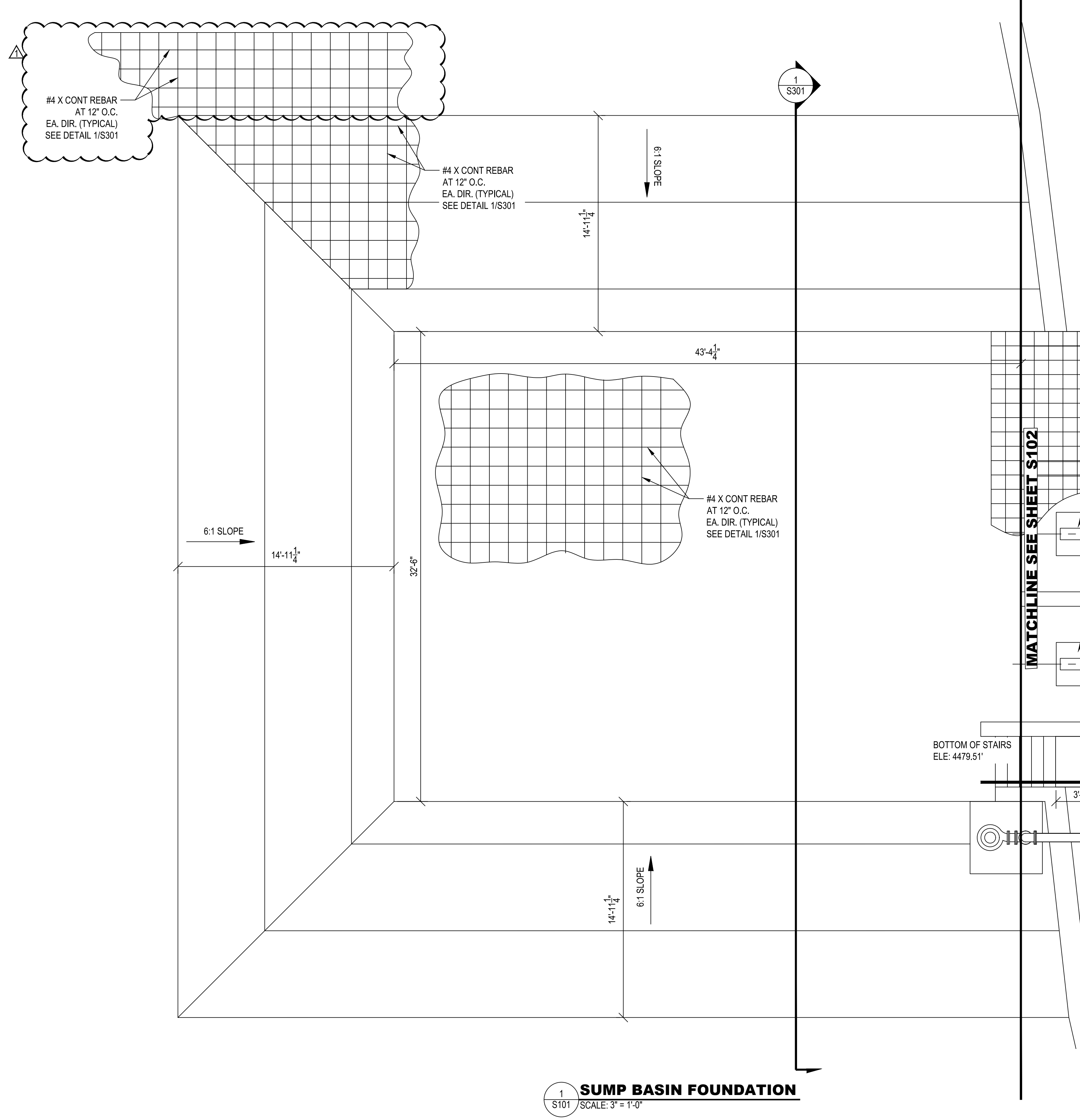
### Sheet S301

Delete and replace this sheet. The section through the sump basin has been extended to clarify the thickness and rebar detailing in the concrete slab outside of the sump basin.

## Attachments:

1. Sheets S101 and S301

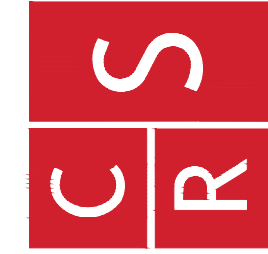
**END OF ADDENDUM**



**1**  
**S101** **SUMP BASIN FOUNDATION**  
SCALE: 3" = 1'-0"

PROJECT NUMBER: 2019-0033	SHEET OF: 19 41	SHEET NUMBER: <b>S101</b>
------------------------------	--------------------	------------------------------

PROVO CITY  
**PROVO AIRPORT PUMP STATION**  
FOUNDATION PLAN



**CRS ENGINEERS**  
Answers to Infrastructure®

PO Box 1485 | 2028 W 500 N | Vernal, UT 84078 | P: 435.781.2550 | www.crsengineers.com

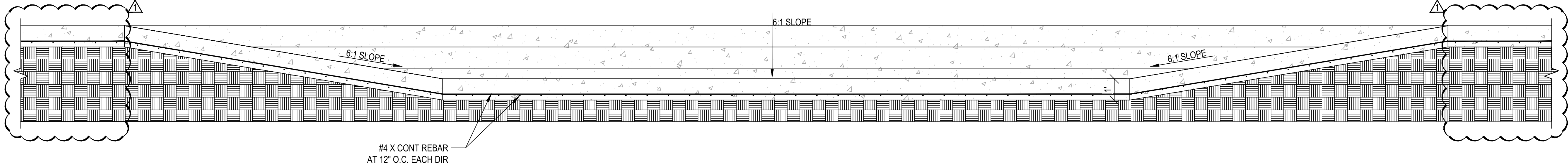
**ISSUED FOR CONSTRUCTION**

REV#	BY	DATE	DESCRIPTION
1	JCD	11-15-2022	REBAR IN CONCRETE SLAB

PROJECT MANAGER K. JONES	CHECKED BY K. JONES	DRAWN BY S. NEDELKOV	ISSUE DATE MARCH 9, 2022
-----------------------------	------------------------	-------------------------	-----------------------------

IF THE SCALE BAR AT LEFT DOES NOT MEASURE 1" IN LENGTH, DO NOT USE. THE INFORMATION CONTAINED IN THIS DRAWING IS THE PROPERTY OF CRS ENGINEERS AND IS NOT TO BE REPRODUCED OR TRANSMITTED IN ANY FORM OR BY ANY MEANS, ELECTRONIC OR MECHANICAL, INCLUDING PHOTOCOPYING, RECORDING, OR BY ANY INFORMATION STORAGE AND RETRIEVAL SYSTEM, WITHOUT THE WRITTEN PERMISSION OF CRS ENGINEERS. PROJECT ENGINEER: AGREEMENT WITH CRS ENGINEERS.

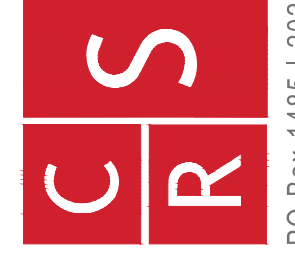


#4 X CONT REBAR  
AT 12" O.C. EACH DIR

**1 SECTION THROUGH SUMP BASIN**  
S301 SCALE: 3/8"=1'-0"

PROJECT NUMBER: 2019-0033	SHEET OF 21 41	SHEET NUMBER: <b>S301</b>
------------------------------	-------------------	------------------------------

PROVO CITY  
**PROVO AIRPORT PUMP STATION**  
SECTION



**CRS ENGINEERS**  
Answers to Infrastructure®  
PO Box 1485 | 2028 W 500 N | Vernal, UT 84078 | P: 435.781.2550 | www.crsengineers.com

**ISSUED FOR  
CONSTRUCTION**

REV#	BY	DATE	DESCRIPTION
1	JCD	11-15-2022	EXTENDING CONCRETE SLAB

PROJECT MANAGER K. JONES	CHECKED BY K. JONES	DRAWN BY S. NEDELKOV	ISSUE DATE MARCH 9, 2022
-----------------------------	------------------------	-------------------------	-----------------------------

IF THE SCALE BAR AT LEFT DOES NOT MEASURE "INCH IN LENGTH, DO NOT USE". THE INFORMATION CONTAINED IN THIS DRAWING IS THE PROPERTY OF CRS ENGINEERS AND IS NOT TO BE REPRODUCED, COPIED, OR TRANSMITTED IN ANY FORM OR BY ANY MEANS, ELECTRONIC OR MECHANICAL, INCLUDING PHOTOCOPYING, RECORDING, OR BY ANY INFORMATION STORAGE AND RETRIEVAL SYSTEM, WITHOUT THE WRITTEN PERMISSION OF CRS ENGINEERS. PROJECT ENGINEER: S. NEDELKOV. PROJECT CHECKER: K. JONES.